

**Morse**<sup>®</sup>



## THE MORSE SILENT CHAIN

The most popular timing system for the motorcycle 4-stroke engines consists of the inverted tooth chain, or silent chain, better- known as "Morse chain" from the name of the world's largest manufacturer of these chains.

The characteristics of the Morse Silent Chain are:

- precision and smoother transmission of power,
- excellent wear and fatigue resistance,
- low power lost,
- light weight and small overall dimensions

in order to meet perfectly the demands of the motorcycle engine makers for a chain which is light, compact, low noise and affordable when it delivers power at some speed rotation higher up to 14000 rpm.

The whole Morse Silent Chain range features the exclusive 'M' specification. It consists of an advanced heat treatment that increases the hardness of the pins surface and of a new assembling technology. This improves the wear and fatigue resistance, which means the minimum elongation of the chain even in case of heavy working conditions.

The Morse Silent Chain for motorcycle engines are manufactured in Japan by Borg Warner Morse TEC, leader in the world with more than 90% of market share. They are used not only as timing chain, but also for other drives like primary, oil pump, counter shaft, cam-to-cam as well as rear transmission as scooter and snowmobile.

## LE CATENE SILENZIOSE MORSE

*Uno dei più diffusi sistemi di trasmissione per il comando della distribuzione dei motori 4T per moto adotta le catene a denti invertiti, o silenziose, note anche come catene Morse dal nome del più importante costruttore di questo prodotto.*

*Caratteristiche delle catene Morse sono:*

- la precisione, la dolcezza e la silenziosità di trasmissione,
- l'elevata resistenza all'usura e alla fatica,
- il limitato assorbimento di energia,
- le dimensioni e il peso estremamente contenuti,

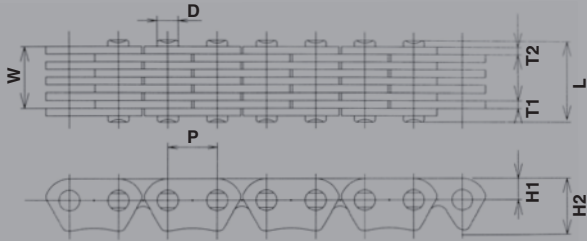
*e rispondono perfettamente alle richieste dei costruttori di motori per sistemi di trasmissione leggeri, compatti, poco rumorosi e sempre più affidabili, soprattutto a regimi di rotazione altissimi, fino a 14000 giri/l'.*

*La gamma di catene Morse è costruita secondo l'esclusiva specifica 'M', che consiste in un trattamento termico per aumentare la durezza superficiale dei perni abbinato ad una tecnologia avanzata di assemblaggio della catena. Si ottiene così un'elevata resistenza all'usura e alla fatica che riduce drasticamente l'allungamento della catena anche in pesanti condizioni d'esercizio.*

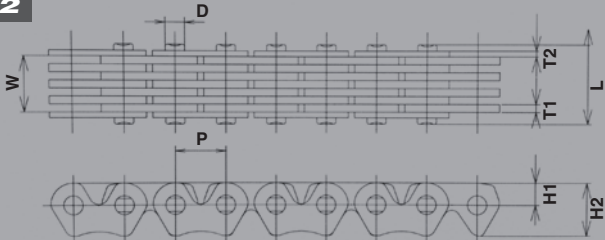
*Le catene Morse sono prodotte in Giappone dalla Borg Warner Morse TEC, leader del settore con una quota di mercato superiore al 90% e sono utilizzate, oltre che per il comando distribuzione, per altre trasmissioni quali primaria, comando pompa olio, alberi controrotanti, cam-to-cam, e anche per la trasmissione finale per scooter e motoslitte.*

# Morse®

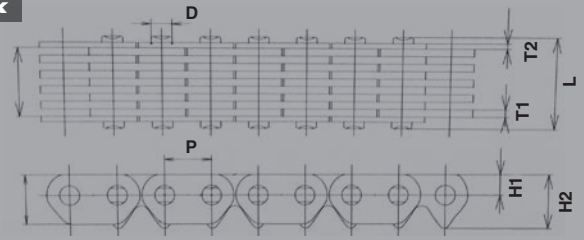
82



92



98x



## 82 LIGHT WEIGHT

CHAIN No	PITCH P	WIDTH BETWEEN GUIDES W	NUMBER OF PLATES	PIN		PLATES				MINIMUM TENSILE STRENGTH	WEIGHT
				D	L	T1	T2	H1	H2		
CATENA	PASSO	LARGHEZZA INTERNA	NUMERO DI PIASTRE	PERNO		PIASTRE				CARICO DI ROTTURA MINIMO	PESO
	mm	mm		mm	mm	mm	mm	mm	mm	kN	kg/m
82RH2005	6,35	3,05	2x3	2,7	6,10	1,0	0,7	2,80	6,72	4,80	0,173
82RH2010	6,35	5,10	3x4	2,7	8,25	1,0	0,7	2,80	6,72	6,85	0,248
82RH2015	6,35	7,15	4x5	2,7	10,90	1,0	1,0	2,80	6,72	9,30	0,340

Featuring low weight and low noise, fit for high RPM engines.  
 Leggere e silenziose, ideali per comandi distribuzione con alti regimi di rotazione.

## 92 LOW NOISE

CHAIN No	PITCH P	WIDTH BETWEEN GUIDES W	NUMBER OF PLATES	PIN		PLATES				MINIMUM TENSILE STRENGTH	WEIGHT
				D	L	T1	T2	H1	H2		
CATENA	PASSO	LARGHEZZA INTERNA	NUMERO DI PIASTRE	PERNO		PIASTRE				CARICO DI ROTTURA MINIMO	PESO
	mm	mm		mm	mm	mm	mm	mm	mm	kN	kg/m
92RH2005	6,35	3,05	2x3	2,4	6,10	1,0	0,7	2,80	6,70	5,10	0,169
92RH2010	6,35	5,10	3x4	2,4	8,25	1,0	0,7	2,80	6,70	7,65	0,242
92RH2015	6,35	7,15	4x5	2,4	10,30	1,0	0,7	2,80	6,70	10,20	0,315
92RH2020	6,35	9,10	5x6	2,4	12,25	1,0	0,7	2,80	6,70	12,75	0,388

Developed from the 82 series to offer a higher efficiency, lower noise and resistance improved up to 10%.  
 Sviluppate dalla serie 82, sulle quale vantano un minor peso ed una maggiore resistenza alla rottura (+10%).

## 98X EXTRA DUTY

CHAIN No	PITCH P	WIDTH BETWEEN GUIDES W	NUMBER OF PLATES	PIN		MINIMUM TENSILE STRENGTH				WEIGHT	
				D	L	T1	T2	H1	H2		
CATENA	PASSO	LARGHEZZA INTERNA	NUMERO DI PIASTRE	PERNO PIASTRE		CARICO DI ROTTURA MINIMO				PESO	
	mm	mm		mm	mm	mm	mm	mm	mm	kN	kg/m
98XRH2005	6,35	3,45	2x3	2,7	6,10	1,2	0,7	2,80	7,33	8,35	0,212
98XRH2010	6,35	5,10	3x4	2,7	8,25	1,0	0,7	2,80	7,33	10,20	0,281
98XRH2015	6,35	7,15	4x5	2,7	10,30	1,0	0,7	2,80	7,33	13,70	0,366

Top performance chains that have been developed from the 92 series to delivery highest strength and fatigue resistance (+ 45%).  
 Derivano dalle catene della serie 92, ma sono notevolmente più resistenti (fino al 45%).



MORSE CATALOGUE  
CATALOGO MORSE



# APRILIA



ETX	ETX600 Tuareg (86)	82RH2015	132	
Pegaso	Pegaso 600 (90-91)	82RH2015	132	
	Pegaso 2 (93-96)	82RH2015	132	
	Pegaso 3 (97-02)	82RH2015	132	
	Rally 600 (86-87)	82RH2015	132	
	Wind 600 (86-91)	82RH2015	132	
	Pegaso 650 (92)	82RH2015	132	
RXV, SXV	RXV/SXV 450/550	92RH2010	82	
Leonardo	Leonardo 125 (95-96)	92RH2005	96	
	Leonardo 150 (97)	92RH2005	96	
	Leonardo 250 ST (04)	82RH2005	104	
	Leonardo 300 ST (05)	82RH2005	104	
Scarabeo	Scarabeo 125 (00-02)	92RH2005	96	
	Scarabeo 150 (00-02)	92RH2005	96	
	Scarabeo 200 (00-03), Scarabeo 200 GT (04)	92RH2005	96	
	Scarabeo 500 (04)	92RH2010	106	
Atlantic	Atlantic 200 (04)	92RH2005	96	
	Atlantic 500 (02-04)	92RH2010	106	
Sport	Sportcity 200 (04-05)	92RH2005	96	
Dorsoduro / Shiver	Dorsoduro, Shiver 750 (07-)	92RH2015	112	
	Dorsoduro, Shiver 1200 (10-)	92RH2015	114	
		92RH2005	52	Water Pump / Pompa Acqua
RSV4	RSV4R 1000 (-9/2010)	98XRH2010	124	
	RSV4R 1000 (9/2010-)	98XRH2015	124	
	RSV4 Factory 1000 (All)	98XRH2015	124	
Tuono	Tuono 1000 4 stroke 4V (10-)	98XRH2015	124	

# BMW

G	G450 X (All)	92RH2015	122	
F	F800 R, F800 GS, F800 S, F800 ST (All)	98XRH2015	146	
S	S1000 RR (All)	98XRH2015	108	
K	K1200 R, K1300 R, K1200 LT, K1300 GT, K1300 S (06-)	98XRH2015	126	
	K1600 GT, K1600 GTL (11-)	98XRH2015	134	

# BUELL

	1125CR - R (All)	98XRH2020	144	
--	------------------	-----------	-----	--

# CAGIVA

Canyon	Canyon 600 (96-98)	82RH2015	122	
River	River 600 (95-97)	82RH2015	122	
W16	W16 600 (93-97)	82RH2015	122	
Raptor	Raptor 1000 (00-03)	92RH2015	92	

# DAELIM

VL	VL125	82RH2005	98	
VX	VX125, VC125	82RH2005	100	
SL	SL125	92RH2005	90	
NF	NF100	82RH2005	96	

# GAS GAS

EC	250cc (All)	98XRH2010	118	
	450 cc (All)	82RH2010	128	

**GILERA**

**Morse®**

XVR	Runner 200 (04)	92RH2005	96
Nexus	Nexus 500 (04)	92RH2010	106

## HONDA

ATC	ATC250 , E, S, F (84-87)	82RH2015	110	
BIZ	Biz125 (05-)	92RH2005	92	
CA	CA125 Rebel (95-00)	82RH2015	94	
	CA250 Rebel (88-)	82RH2015	98	
CB	CB50 (03-)	92RH2005	80	
	CB125 (87-)	82RH2015	94	
	CB250 (77-83)	82RH2015	108	
	CB250 Nightawk (90-)	82RH2015	98	
	CB250 RS (78-83)	82RH2015	104	
	CB250 T, TZ (80-84)	82RH2015	108	
	CB400 (94-98)	92RH2010	120	
	CB400 (99-)	92RH2010	126	
	CB400 F2 (92-93)	82RH2015	120	
	CB1 400 (89-91)	82RH2010	120	
	CB450, 400 (78-82)	82RH2015	110	
	CB500 (93-)	82RH2010	130	
	CB50V (97-)	92RH2010	80	
	CB600 F (97-)	92RH2015	116	
	CB600 F Hornet ('14- )	92RH2010	122	
	CB650 F, Z, PZ (78-82)	82RH2015	112	
	CB750 F (78-82)	82RH2015	82	Cam Drive Upper / Distribuzione Superiore
		82RH2015	124	Cam Drive Lower / Distribuzione Inferiore
	CB750 K, P, L (78-80)	82RH2015	82	Cam Drive Upper / Distribuzione Superiore
		82RH2015	124	Cam Drive Lower / Distribuzione Inferiore
	CB900 F (78-81)	82RH2015	82	Cam Drive Upper / Distribuzione Superiore
		82RH2015	126	Cam Drive Lower / Distribuzione Inferiore
	CB1000, T2 (92-)	82RH2015	150	
	CB1100 F (14-)	92RH2015	146	
	CB1100 R (80-83)	82RH2015	82	Cam Drive Upper / Distribuzione Superiore
		82RH2015	126	Cam Drive Lower / Distribuzione Inferiore
	CB1300 DC (97-02)	92RH2015	146	
	CB1300 (14-)	92RH2015	146	
CBR	CBR400 F1, F2(83-86)	82RH2015	130	
	CBR450 (88-)	82RH2015	110	
	CBR600 (03-)	92RH2015	116	
	CBR600 F (86-89)	82RH2015	126	
	CBR600 F (90-94)	92RH2015	116	
	CBR600 F (95-)	92RH2015	116	
	CBR900 RR (91-93)	92RH2015	126	
	CBR900 RR (94-99)	92RH2015	126	
	CBR900 RR (00-03)	92RH2015	124	
	CBR900 RR (04-)	92RH2015	124	
		92RH2005	68	Oil Pump Drive / Pompa Olio
	CBR954RR (02-04)	92RH2015	126	
	CBR1000 (03-)	92RH2015	146	
	CBR1000 F (86-00)	82RH2015	150	
	CBR1000 RR (06-07)	92RH2015	126	
	CBR1000 XX (97-02)	92RH2015	130	
	CBR1000 XX (03)	92RH2015	140	
		92RH2005	52	Oil Pump Drive / Pompa Olio
	CBR1000 RR (08-)	92RH2020	124	
		92RH2005	72	Oil Pump Drive / Pompa Olio
	CBR1100 (99)	92RH2015	130	
CBX	CBX200 (92-)	82RH2005	102	
	CBX250 (02-)	92RH2010	126	
	CBX250 RS (83-86)	82RH2015	108	
	CBX400 F1, F2 (81-86)	82RH2015	130	
	CBX550 C (82-84)	82RH2015	140	
	CBX550 F1, F2 (81-84)	82RH2015	134	
	CBX600 (86-)	82RH2015	126	
	CBX650 E (82-87)	82RH2015	144	
	CBX750 F, 700 F (83-89)	82RH2015	146	
		82RH2015	72	ACG Drive / Alternatore
	CBX750 (90-)	82RH2015	146	
	CBX1000 (78-79)	82RH2015	82	Cam Drive Upper / Distribuzione Superiore
		82RH2015	120	Cam Drive Lower / Distribuzione Inferiore
CD	CD125 (87-)	82RH2015	94	
	CD250 (88-)	82RH2015	98	
CH	CH80 (03-)	92RH2005	86	

**HONDA**


MAKE AND SERIES	MODEL & YEAR	MORSE CHAIN	LINKS	DRIVE (TIMING IF BLANK)	
MARCA E SERIE	MODELLO & ANNI	CATENA MORSE	MAGLIE	TRASMISSIONE (DISTRIBUZIONE SE NON INDICATO)	
CH	CH125 (93-)	92RH2005	94		
	CH150F, G, 125 (84-)	82RH2005	94		
	CH250 E, F, G (83-92)	82RH2005	98		
CL	CL400 X (98-)	92RH2010	112		
	CM125 (87-)	82RH2015	94		
CM / CMX	CM250 C (81-87)	82RH2015	98		
	CMX250 (83-) 1440 1-KB4-6700 -M1	82RH2015	98		
	CMX250 1440 1-KFB-7510-M	92RH2005	104		
	CM450, 400 T (80-87)	82RH2015	110		
	CRF150R ('12-)	92RH2015	96		
CRF	CRF230M (08-)	92RH2005	104		
	CRF250 (02-03)	92RH2015	112		
	CRF250 R (04-08)	92RH2015	104		
	CRF250 R (09-)	92RH2015	106		
	CRF450 R (04-07) P/N 1440 1-MEB-6710-M1	92RH2015	112		
	CRF450 R (08-) P/N 1440 1-MEN-A330-M1	96RH2015	108		
	Dio	Dio (03-)	92RH2005	88	
FJS	FJS600 (01-)	92RH2010	138		
GB	GB250 (83-)	82RH2015	108		
	GB400 (87-)	82RH2010	118		
	GB500 (87-)	82RH2010	118		
GL / GLS	GL125 (84-)	82RH2005	100		
	GLS200 (97-)	92RH2005	102		
	GL1500 (87-93)	82RH2010	54	Oil Pump Drive / Pompa Olio	
	GL1800 (01-)	92RH2015	148		
		92RH2005	62	Oil Pump Drive / Pompa Olio	
FT	FT500, 400 (78-83)	82RH2015	120		
NSA	NSA700 A (08-)	92RH2010	118		
		92RH2005	64	Oil Pump Drive / Pompa Olio	
	NSA750 (92-)	82RH2015	146		
NSF	NSF250 R (12-)	96RH2015	120		
NV	NV400 (82-87)	82RH2015	116		
	NV400 (93-)	82RH2010	118		
		82RH2010	70	Oil Pump Drive / Pompa Olio	
	NV650 (87-93)	82RH2010	118		
		82RH2010	70	Oil Pump Drive / Pompa Olio	
	NV750 (82-85)	82RH2015	128		
NT	NT650, 400 (90-93)	82RH2010	118		
		82RH2010	70	Oil Pump Drive / Pompa Olio	
	NT700 VA Deauville	92RH2010	118		
NTV	NTV650 (92-)	82RH2010	118		
		82RH2010	70	Oil Pump Drive / Pompa Olio	
NSS	NSS250 Forza (04-)	92RH2010	98		
	NSS300 FORZA (13-)	92RH2005	104		
		92RH2005	54	Oil Pump Drive / Pompa Olio	
NX	NX125 (88-)	82RH2005	100		
	NX150 (88-)	82RH2005	100		
	NX200 (92-)	82RH2005	102		
	NX250 (87-)	82RH2010	126		
	NX350 (91-)	82RH2015	108		
	NX400 (01-)	92RH2010	112		
	NX650 (95-)	92RH2010	118		
	NX650, 500 (88-)	82RH2010	118		
PC	PC800 (93-)	82RH2015	128		
RTL	RTL250 (04-)	92RH2010	90		
Scoopy	50cc 4 cycle Scooter (01-)	92RH2005	82		
SL	SL230 (02-)	92RH2005	104		
ST	ST1100 (89-93)	82RH2010	58	Oil Pump Drive / Pompa Olio	
	ST1100 (02-)	92RH2010	138		
		92RH2005	70	Oil Pump Drive / Pompa Olio	
SW	Silver Wing 400	92RH2010	138		
TACT	TACT IVY (86-88)	82RH2005	82		
TRX	TRX230 (97-)	92RH2015	52		
		92RH2005	46	Oil Pump Drive / Pompa Olio	
	TRX300 (13-)	92RH2010	60		
	TRX300, FW, 250 XH (86-93)	82RH2010	110		
	TRX350H, UH (84-86)	82RH2015	114		
	TRX400 (95-06)	92RH2015	56		
	TRX400 (07)	92RH2010	60		
	TRX450 R (04-05)	92RH2015	114		
	TRX450 R (06-)	92RH2015	114		
	TRX500 (04-)	92RH2010	56		
	TRX650 FA (02-)	92RH2010	110		
	TRX650 (06-)	92RH2010	110		
	TRX700 (08-)	92RH2010	120		
	VF / VFR	VF750 C (92-) Magna/RS	92RH2015	128	
		VF750 S (81-86)	82RH2015	148	
VF800 F1 Interceptor (02-)		92RH2015	132		

# HONDA



MAKE AND SERIES	MODEL & YEAR	MORSE CHAIN	LINKS	DRIVE	
MARCA E SERIE	MODELLO & ANNI	CATENA MORSE	MAGLIE	TRASMISSIONE	
VF / VFR	VFR800 (13-)	92RH2015	132		
	VF1100 C (82-84)	82RH2015	154		
	VFR1200 (09-)	92RH2015	120		
VT / VTR / VTX	VT250 (86-93)	82RH2010	128		
	VT600 (00-)	82RH2010	70	Oil Pump Drive / Pompa Olio	
	VT600 C (87-93)	82RH2010	118		
	VT750 C, C2	92RH2010	118		
	VTR1000 F(97-)	92RH2020	152		
			92RH2005	48	Oil Pump Drive / Pompa Olio
			82RH2015	136	
VRX	VRX (95-00) Roadstar	92RH2015	140		
		92RH2005	52	Oil Pump Drive / Pompa Olio	
		82RH2010	118		
X4	VRX (95-00) Roadstar	82RH2010	70	Oil Pump Drive / Pompa Olio	
XBR	X4 1300 (97-)	82RH2010	70	Oil Pump Drive / Pompa Olio	
		92RH2015	154		
XEL	XBR500 S, 400 (84-88)	82RH2015	118		
		82RH2010	118		
XL /XLR / XLX	XBR500 (87-88)	82RH2010	118		
		82RH2010	128		
		92RH2005	94		
		82RH2015	100		
		82RH2015	102		
		82RH2015	104		
		82RH2015	102		
		82RH2015	102		
		82RH2015	102		
		82RH2015	108		
		82RH2010	118		
		82RH2010	70	Oil Pump Drive / Pompa Olio	
		82RH2015	120		
		82RH2010	118		
XR / XRV	XELVIS (94-)	82RH2010	118		
		92RH2005	94		
		82RH2015	100		
		82RH2015	102		
		82RH2015	104		
		82RH2015	102		
		82RH2015	102		
		82RH2015	108		
		82RH2010	118		
		82RH2010	70	Oil Pump Drive / Pompa Olio	
XR / XRV	XL25V Varadero (01-04)	82RH2015	120		
		82RH2010	118		
		82RH2010	70	Oil Pump Drive / Pompa Olio	
		82RH2015	118		
		92RH2010	118		
		82RH2010	118		
		82RH2010	118		
		82RH2015	100		
		82RH2015	102		
		82RH2015	102		
		82RH2015	102		
		82RH2015	108		
		82RH2010	112		
		82RH2015	118		
82RH2010	118				
92RH2010	122				
82RH2010	118				
82RH2010	72	Oil Pump Drive / Pompa Olio			

# HUSABERG

FE	FE570 (09-12)	92RH2015	114	
----	---------------	----------	-----	--

# HYOSUNG

KR	KR110	82RH2010	92	
TN	TN125, GS125, GA125	82RH2010	100	
MS	MS1-125	92RH2005	100	
G	GA125F	92RH2010	98	
		92RH2005	124	
		92RH2010	124	
		92RH2010	138	

# KAWASAKI

AF	AF450 A1 (88)	82RH2015	148	
		82RH2015	148	
AN	AN120 (98-)	92RH2010	94	
BJ	BJ250 A1-3 (92-95), B1-7 (92-99)	82RH2010	122	
		82RH2010	122	
	BJ250 C1-11 (95-06), D1-10 (96-06) Estrella RS, Custom	82RH2010	122	



# KAWASAKI



	BJ250 E1-4 (96-99)	82RH2010	122
	BJ250 F1-4 (02-05), G1-3 (02-04), H1 (02) 250 TR	82RH2010	122
BN	BN12 A1, 2 (98-06) Eliminator 125	92RH2010	102
	BN125 A3-8 (00-05) Eliminator 125	92RH2010	102
	BN175 A1 (98) Eliminator175	92RH2010	102
	BN175 A2-8 (99-05) Eliminator175	92RH2010	102
	BN175 B1 (00), C1 (01), D1 (02)E1-3 (03-05) Eliminator175	92RH2010	102
BP	BP175 A1 (00)	92RH2010	102
BR	BR150 A1 (96)	92RH2010	102
	BR250 A 1, 2 (86-87)	82RH2010	158
	BR250 B1 (86)	82RH2010	158
EL	EL250 A1-6 (87-90-94-96), B1-3 (87-90) Eliminator	82RH2010	124
	EL250 C1-6, 8 (89-96-98)	82RH2010	124
	EL250 D1-5, 7 (90-94-96 ) EL250	82RH2010	124
	EL250 E1-4 (91-94) EL250	82RH2010	124
	EL250 F2-6 (96-97-99-01-03) EL250	82RH2010	124
EN	EN400 A1-4 (85-87-90)	82RH2015	148
	EN400 B1-3 (90-93)	82RH2015	148
	EN400 C1, 2 (94-95)	82RH2015	148
	EN450 A1-6 (85-90) 450 Ltd	82RH2015	148
	EN500 A1-7 (90-96)	82RH2015	148
	EN500 B1, 2 (94-95)	82RH2015	148
	EN500 C1-10 (96-06) EN500 Vulcan 500 Ltd	82RH2015	148
ER	ER250 A1 (83)	82RH2015	102
	ER250 B1-3 (83, 84, 88)	82RH2015	102
	ER500 AB1-4 (97-00), C1-5 (01-05), D1-2 (01-03) ER-5	82RH2015	148
	ER650 A, B (06-) ER-6F - N	92RH2015	134
EX	EX250 C1-3, 5 (83-85-87)	82RH2015	102
	EX250 D1 (83)	82RH2015	102
	EX250 E1, 2 (86-87) GPZ250 R	82RH2010	124
	EX250 F1-19 (87-06) GPX250 R	82RH2010	124
	EX250 G1 (88)	82RH2010	124
	EX250 H1-16 (90-06) ZZ-R250	82RH2010	124
	EX250 A/B (13-) Ninja 250	92RH2010	124
	EX300 A/B (13-) Ninja 300	92RH2010	124
	EX305 A1 (83)	82RH2015	102
	EX305 B1-10 (83-94) GPZ305	82RH2015	102
	EX400 A1-4 (87-90) GPZ400 S	82RH2015	148
	EX400 B1, 2 (94-95 )	82RH2015	148
	EX400 C (94-) EX-4	82RH2015	148
	EX500 A1-7 (87-93) GPZ500 S	82RH2015	148
	EX500 B1-6 (88-93) GPZ500 S	82RH2015	148
	EX500 C1 (92) GPZ500 S	82RH2015	148
	EX500 D1-12 (94-06), E1-10 (94-03), F1-3 (94-96) Ninja500, GPZ500 S	82RH2015	148
	EX650 AB (06-) ER-6f	92RH2015	134
KZ	KZ400 B, G (80-81)	82RH2015	114
	KZ400 E3, 4, K2, 3 (81-82)	82RH2015	140
	KZ400 H (80-83)	82RH2015	114
	KZ400 J2, 3, 4 (81-83)	82RH2015	140
	KZ400 L (81)	82RH2015	140
	KZ400 M1, 2 (82-83)	82RH2015	140
	KZ400 R (82-83)	82RH2015	114
	KZ400 T (83-84)	82RH2015	114
	KZ400 V (82)	82RH2015	114
	KZ440 A (80-83)	82RH2015	114
	KZ440 B, C (80-84)	82RH2015	114
	KZ440 D (80-84)	82RH2015	114
	KZ440 F (82)	82RH2015	114
	KZ440 G (82-83)	82RH2015	114
	KZ440 H (82-84)	82RH2015	114
	KZ500 A (79-80)	82RH2015	140
	KZ500 B3, 4 (81-82)	82RH2015	140
	KZ500 M (83)	82RH2015	140
	KZ550 (81)	82RH2015	140
	KZ550 A2, 3, 4 (81-82), B2, 3 (81-83)	82RH2015	140
	KZ550 C2, 3, 4 (81-83), D1 (81), E1, 2 (81-82)	82RH2015	140
	KZ550 E1, 2 (81-82), F1, 2, 3 (83-85)	82RH2015	140
	KZ550 G1-9 (83-94) GT550	82RH2015	140
	KZ550 H1, 2 (82-83), N1M1 (83)	82RH2015	140
	KZ650 A, B, C (80-83), D 4 81)	82RH2015	150
	KZ650 E, F2-4 (81-83), H1-3 (81-83), J (80-83)	82RH2015	150
	KZ700 A 1 (84)	82RH2015	150
	KZ750 A (83-86)	82RH2015	150
	KZ750 E2, 3, H2, 3 (81-82)	82RH2015	150
	KZ750 L1-4 (81-84)	82RH2015	150
	KZ750 N1, 2, (82-83)	82RH2015	150
	KZ750 P1-7, 9 (82-85, 87-88, 92, 94 ) GT750	82RH2015	150
	KZ750 V 1 (82) R1(82)	82RH2015	150

**KAWASAKI**

**Morse®**

	KZ1000 F (79)		82RH2015	140	
	KZ1000 J1, 2, 3 (81-83)		82RH2015	152	
	KZ1000 K1, 2, M1, 2 (81-82)		82RH2015	152	
	KZ1000 L (81)		82RH2015	152	
	KZ1000 P1-24 (82-05)	KZ1000 Police	82RH2015	152	
	KZ1000 R1, 2 (83)		82RH2015	152	
	KZ1100 A1, 4 (81-84)		82RH2015	158	
	KZ1100 B1, 2 (81-82)		82RH2015	152	
	KZ1100 D1, 2 (82-83)		82RH2015	152	
	KZ1100 K, L1 (83)		82RH2015	152	
	KZ1100 R1 (84)		82RH2015	152	
	KZ1200 A, B (79)		82RH2015	158	
	KZ1300 A1, 3 (79-81)		82RH2015	158	
	KZ1300 A3, 5 (81-83)		82RH2015	158	
	KZ1300 B (80-81)		82RH2015	158	
Jet Sky	JT1200 B1, 2 (03-04), D1 (05-06)	Jet Sky STX-12F	92RH2015	136	
			92RH2010	52	Oil Pump Drive / Pompa Olio
	JT1500 A (06-)	Jet Sky STX-15F	98XRH2010	136	
			98XRH2010	52	ACG Drive / Alternatore
	JT1500 A1, 2 (04-05)	Jet Sky STX-15F	92RH2015	136	
			92RH2010	52	Oil Pump Drive / Pompa Olio
	JT1500 B (07-)	Jet Sky Ultra 250 X	98XRH2015	138	
			98XRH2010	52	ACG Drive / Alternatore
	JT1500 B (11-)	Jet Ssky Ultra 300X	98XRH2020	138	
	JT1500 C (07-)	Jet Sky Ultra LX	98XRH2010	136	
			98XRH2010	52	ACG Drive / Alternatore
KAF	KAF450 A (88)		82RH2015	148	
	KAF450 B (88-)		82RH2015	148	
KFX	KFX700 V Force		92RH2010	58	Primary Drive / Primaria
KL	KL250 D2 -22 (84-05)	KLR250	82RH2010	158	
	KL250 E1, 2 (86-87)		82RH2010	158	
	KL250 F (88)		82RH2010	158	
	KL250 G1-9 (97-05), H1-9 (97-06)	Supersherpa	92RH2010	122	
	KL250 J1-3 (00-03-05), K1 (03)	Stockman 250	92RH2010	122	
	KL500 A1-3 (87-89)		82RH2015	174	
	KL500 B1-3 (89-91)	Tengai	82RH2015	174	
	KL600 A1-5 (84-85-88-90)	KLR600	82RH2015	172	
	KL600 B1-9 (85-94)		82RH2015	172	
	KL650 A1-8 (87-06)	KLR650	82RH2015	174	
	KL650 A9-19 (95-05), C1-10 (95-04), D1 (99)	KLR600	92RH2015	174	
	KL650 B1-4 (89-92)	Tengai	82RH2015	174	
	KL650 C (95-)	KLR650	92RH2015	174	
	KLR650 -8 (87-06)		82RH2015	174	
KLE	KLE250 A1-6 (93-95-97-99-01)	KLE250	82RH2010	124	
	KLE400 A1-6 (91-95-99)	KLE400	82RH2015	148	
	KLE500 A1-13 (91-03) B(04-06)	KLE500	82RH2015	148	
	KLE650 A/B	VERSYS	92RH2015	134	
KLF	KLF185 A1-4 (85-88)		82RH2010	102	
	KLF220 A1-15 (88-02), B1 (01)	KLF220	82RH2010	106	
	KLF250 A1-3 (03-06)		82RH2010	106	
	KLF400 A1 (92)	KLF400	82RH2010	118	
	KLF400 B1-7 (93-99)		82RH2010	118	
KLX	KLX250 D, E, F (95-), G1, 2 (94-95)	KLX250 , SR, ES	92RH2010	128	
	KLX250 D1-4 (93-96), E1-5 (95-99)	KLX250 R	92RH2010	128	
	KLX250 F1-4 (94-97)	KLX250 ES	92RH2010	128	
	KLX250 H1-7 (98-06)	KLX250	92RH2010	128	
	KLX250 J 1-7 (98-04)	D-Tracker	92RH2010	128	
	KLX250 K 1 (01), L1-3 (02-04)		92RH2010	128	
	KLX250 M1, 2 (04-06), N1, 2 (04-05)	D-Tracker	92RH2010	128	
	KLX300 A1-10 (96-06), B1-7 (97-03)	KLX300R	92RH2010	128	
	KLX650 A1-3 (93-95), B1-3 (93-95), C1-4 (93-96)	KLX650	92RH2015	94	Cam Drive Upper / Distribuzione Superiore
			92RH2010	82	Cam Drive Lower / Distribuzione Inferiore
	KL650 D1-6 (96-97-99-01)	KLX650 R	92RH2015	174	ACG Drive / Alternatore
			92RH2015	94	Cam Drive Upper / Distribuzione Superiore
			92RH2010	82	Cam Drive Lower / Distribuzione Inferiore
KSF	KSF250 A1 - 18 (87-04)		82RH2010	158	
	KSF450	KSF450 R	98XRH2010	126	
KSV	KSV700 A (04-06)	KXF700 V Force	92RH2010	58	Primary Drive / Primaria
	KSV700 B (04-06)	KXF700 V Force	92RH2010	58	Primary Drive / Primaria
KVF	KVF360 C1-3 (03-06)	KVF360 4X4	82RH2010	118	
	KVF360 A1-3 (03-06) B1 -3 (03-06)	KVF360 4X4, KVF360	82RH2010	118	
	KVF400 A1, 2 (97-98), B1 (98)		82RH2010	118	
	KVF400 C1-4 (99-02), D1-4 (99-02)		82RH2010	118	
	KVF650 A1, 2 (01-03)	KVF650 4X4	92RH2010	92	Cam Drive Upper / Distribuzione Superiore
			92RH2015	46	Cam Drive Lower / Distribuzione Inferiore
			92RH2010	58	Oil Pump / Pompa Olio
	KVF650 B1, 2 (02-03), C1 (04)	KVF650 4X4	92RH2010	92	Cam Drive Upper / Distribuzione Superiore

**KAWASAKI**

**Morse®**

KVF	KVF650 B1, 2 (02-03), C1 (04)	KVF650 4X4	92RH2015	46	Cam Drive Lower / Distribuzione Inferiore	
			92RH2010	58	Oil Pump / Pompa Olio	
	KVF650 D/E (05-06) F/G (06)	KVF650	92RH2010	92	Cam Drive Upper / Distribuzione Superiore	
			92RH2015	46	Cam Drive Lower / Distribuzione Inferiore	
			92RH2010	58	Oil Pump / Pompa Olio	
	KVF700 A1, 2 (04-06)	KVF700 4x4	92RH2010	92	Cam Drive Upper / Distribuzione Superiore	
			92RH2015	46	Cam Drive Lower / Distribuzione Inferiore	
			92RH2010	58	Oil Pump / Pompa Olio	
	KVF700 B1, 2 (04-05), C1, 2 (04-05)	D1 (05-06) KVF700 4X4	92RH2010	92	Cam Drive Upper / Distribuzione Superiore	
			92RH2015	46	Cam Drive Lower / Distribuzione Inferiore	
			92RH2010	58	Oil Pump / Pompa Olio	
KX	KX250 (06-)	KX250 F	92RH2010	114		
	KX250 N1, 2 (04-05), P1, 2 (04-05)	KX250 F	92RH2010	114		
	KX450 (06-08)	KX450 F	98XRH2010	124		
	KX450 (08-)	KX450 F	98XRH2010	122		
LT	LT150 A (84-87)		82RH2010	102		
	LT160 A1 (85)		82RH2010	102		
	LT185 A1, 2 (86-87)		82RH2010	102		
VN	VN250 A1-6 (98-04), C1, 2 (00-06)	Eliminator 250 V	92RH2010	122		
	VN250 B1-4 (00-02-04)	Eliminator 250 V	92RH2010	122		
	VN400 A1-5 (95-99), B1-5 (95-99)	VN400	92RH2010	124		
	VN400 C1-8 (96-03)	VN400 Drifter, Vulcan Drifter	92RH2010	124		
	VN400 D1-4 (99-02), E1 (01)	VN400 Drifter, Vulcan Drifter	92RH2010	124		
	VN800 A1-11 (95-05)	Vulcan 800	92RH2010	124		
	VN800 B1-10 (96-06)	VN800 Classic	92RH2010	124		
	VN800 C1, 2 (99-00), E1-5 (00-05)	Vulcan 800 Drifter	92RH2010	124		
	VN900 B (06-)	VN900	92RH2010	124		
	VN1500 A1-13 (87-99)	VN-15	92RH2010	144		
	VN1500 B1-6 (87-92)	VN-15SE	92RH2010	144		
	VN1500 C1-4 (94-97)	VN-15	92RH2010	144		
	VN1500 D1, 2 (96-97)	VN-15	92RH2010	144		
	VN1500 E1-7 (98-04), N1-4 (00-02-06)	F(06-) Vulcan1500	92RH2010	144		
	VN1500 F1, 2 (98-99), G1-3 (98-01)		92RH2010	144		
	VN1500 H1, 2 (98-99), J1, 2 (99-00)		92RH2010	144		
	VN1500 L1-5 (00-04)	VN1500 Classic Tourer Fi	92RH2010	144		
	VN1500 P1, 2 (02-03)	VN1500 Mean Steak	92RH2010	144		
	VN1500 R1-5 (01-05)	VN1500 Drifter	92RH2010	144		
	VN1500 S1 (02)		92RH2010	144		
	VN1600 A1-3 (03-06)	E(06) VN 1600 Classic	92RH2010	144		
	VN1600 B1, 2 (04-05), C1, 2 (04, 05), D1 (05)	VN1600 ES	92RH2010	144		
	VN2000 A1, 2 (04-06)	E F (06) VN2000/Classic (LT)	98XRH2015	70		
	ZG	ZG1300 A1-5 (84-89)		82RH2015	158	
	ZL	ZL400 A1, 2 (86-87)	Eliminator400	82RH2010	136	
		ZL400 B1, 2, 3 (88-90)	Eliminator400 SE	82RH2010	136	
		ZL400 C1, 2, 3 (88-90)	Eliminator400 LX	82RH2010	136	
ZL400 D1, 2 (94-95)		Eliminator400	82RH2010	136		
ZL500 A1, 2 (86-87)			82RH2010	136		
ZL500 B (88-90)			82RH2010	136		
ZL600 A1, 2 (86-87), B1, 2, 3 (95-97), 500 A1, 2 (86-87)			82RH2010	136		
ZN	ZN700 A1, 2 (84-85)		82RH2015	150		
	ZN750 A1, 2 (84-85)		82RH2015	150		
	ZN1100 B1 (83)		82RH2015	152		
ZR	ZN1300 A1-6 (83-88)		82RH2015	158		
	ZR250 A1-9 (91-01)	Balius	82RH2005	106		
	ZR250 B1-9 (97-06)	Balius II	82RH2005	106		
	ZR250 C1-3 (02-04)		82RH2005	106		
	ZR250 D1, 2 (03, 04)		82RH2005	106		
	ZR400 A1 (83)		82RH2015	140		
	ZR400 B1 (84)		82RH2015	140		
	ZR400 C1-7 (89-95)	Zephyr	82RH2015	140		
	ZR400 D1-4 (92-95)	Xanthus	92RH2010	118		
	ZR400 E1-10 (94-06)	ZRX	82RH2015	132		
	ZR400 F1-10 (95-06)	ZRXII	82RH2015	132		
	ZR400 G1-9 (96-06)	Zephyr	92RH2015	140		
	ZR400 H1 (97)		82RH2015	132		
	ZR400 J1 (03)		82RH2015	132		
	ZR500 A1 (83)		82RH2015	140		
	ZR550 A1, 2 (83-84)		82RH2015	140		
	ZR550 B1-9 (91-98)	Zephyr	82RH2015	140		
	ZR750 C1-10 (91-95-99-06), D1-6 (96-02), E1 (97)	Zephyr 750, 750 RS	82RH2015	150		
	ZR750 F1-5 (99-03), H1-5 (01-05)	ZR-7, 7S	82RH2015	150		
	ZR750 J1, 2 (04-06), K1 (05-06)	Z750, Z750 S	92RH2015	126		
ZR750 L/M(07-12)	Z750	92RH2015	126			
ZR750 N/P(07-12)	Z750 R	92RH2015	126			
ZR800 A/B(13-)	ZR800	92RH2015	126			
ZR1000 A1-3 (03-06)	Z1000	92RH2015	126			
ZX	ZX250 A1, 2 (89-96), B1, 2 (89-90)	ZXR250	82RH2005	106		

# KAWASAKI



ZX	ZX250 C1-8 (91-95, 97-00)	ZXR250	82RH2005	106	
	ZX250 D1, 2 (91-92)	ZXR250	82RH2005	106	
	ZX250 (08-12)		92RH2010	124	
	ZX400 A1-5 (83-87)		82RH2015	140	
	ZX400 B (84)	GPZ400	82RH2015	140	
	ZX400 C1-5 (84-85-87-91-94)	GPZ400 F, F2	82RH2015	140	
	ZX400 D1-4 (85-89)	GPZ400 R	82RH2010	136	
	ZX400 E1-5 (86-90)	FX400 R	82RH2010	136	
	ZX400 F1 (87)		82RH2010	136	
	ZX400 G1, 2 (88-89)		82RH2010	118	
	ZX400 H1, 2 (89-90)	ZXR400	82RH2010	118	
	ZX400 J1, 2 (89-90)		82RH2010	118	
	ZX400 K1-3 (90-92)	ZZ-R400	82RH2015	132	
	ZX400 L1-9 (91-99), M1-6 (91-95-99)	ZXR400	92RH2010	118	
	ZX400 M (91-93)	ZXR400 R	92RH2010	118	
	ZX400 N1-11 (93-06)	ZZ-R400	82RH2015	132	
	ZX500 A1, 2, 3 (85-87)	GPZ500 R	82RH2010	136	
	ZX500 B1, 2, 3 (88-90)	GPX500 R	82RH2010	136	
	ZX500 C1-3 (90-92)	ZZ-R500	82RH2015	132	
	ZX500 D1-4 (93-96)	ZZ-R500	82RH2015	132	
	ZX550 A1-6 (84-89)		82RH2015	140	
	ZX600 A1-5 (85-89)	GPZ600 R	82RH2010	136	
	ZX600 B1 (87)	GPZ600 R	82RH2010	136	
	ZX600 C1-10 (88-97)	GPZ600 R	82RH2010	136	
	ZX600 D1-4 (90-93)	ZZ-R600	82RH2015	132	
	ZX600 E1-13 (93-06)	ZZ-R600	82RH2015	132	
	ZX600 F1-3 (95-97)	ZX-6R	92RH2015	122	
	ZX600 J1-4 (00-02-05)	ZX-6RR	92RH2015	122	
	ZX600 K1, 2 (03-04), M1 (04), N1 (05)	ZX-6RR	98XRH2010	116	
	ZX600 (07-13)	ZX-6R	98XRH2010	116	
	ZX636A1 (02)	ZX-6R	92RH2015	122	
	ZX636 B1, 2 (03-04), C1 (05), D(06-)	ZX-6R	98XRH2010	116	
	ZX750 A1, 2, 3, 5 (83-85-87)		82RH2015	150	
	ZX750 E1, 2 (84-85)	GPZ750	82RH2015	150	
	ZX750 F1-4 (87-90)	GPX750 R	82RH2015	138	
	ZX750 H1, 2 (89-90)	ZXR750	82RH2015	138	
	ZX900 B1-4 (94-97)	ZX-9R	92RH2015	134	
	ZX900 C1, 2 (98-99), E1, 2 (00-01), F1, 2 (02-03)	ZX-9R	92RH2015	126	
	ZX1000 (06-)	ZX-10R	98XRH2015	124	
	ZX1000 (11-)	ZX-10R	98XRH2015	126	
			92RH2005	80	Oil Pump Drive / Pompa Olio
	ZX1000 C1, 2 (04-05)	ZX-10R	98XRH2015	124	
	ZX1100 A1-3 (83-85)	GPZ1100 F	82RH2015	152	
	ZX1100 B1 (83)	GPZ1100 F	82RH2015	152	
	ZX1200 A1, 2 (00-01), B1-4 (02-06)	ZX-12R	92RH2015	132	
	ZX1400 A, B (06-11)	ZZ-R1400	92RH2015	130	
	ZX1400 C (08-)	1400 GTR	92RH2015	130	
	ZX1400 E/F(12-)	ZX14 R, ZZR1400	98XRH2015	132	

# KTM

SX-F	SX-F 250 (09-13)		92RH2015	108	
	SX-F 350 (09>)		98XRH2015	112	
	SX-F 450 (08>09)		98XRH2015	80	
	SX-F 505 (08>09)		98XRH2015	80	
EXC-F	EXC-F 250 (09-13)		92RH2015	108	
	EXC-F 350 (11-)		98XRH2015	112	
	EXC-F 400 (09-11)		92RH2015	110	
	EXC-R 450 (08-12)		92RH2015	110	
XC-F	XC-F 450 (08>09)		98XRH2015	80	
	XC-F 505 (08>09)		98XRH2015	80	
	XC-R530 (08-11)		92RH2015	114	
SMR	SMR 450 (08>09)		98XRH2015	80	
LC8	Adventure 950 (03>06)		92RH2015	88	
	Duke 950 (04)		92RH2015	88	
	Supermoto 950 (05>06)		92RH2015	88	
	Supermoto 950 (05>06)		92RH2015	88	
	Superduke 990 (05>06)		92RH2015	88	

# MALAGUTI



Madison	Madison 125 (01>03)	82RH2005	94
	Madison 150 (01>03)	82RH2005	94
	Madison K-400 (03>04)	82RH2005	110
	Madison S-200 (04)	92RH2005	96
	Madison S-250 (02>03)	82RH2005	104
F12	F12 200 Phantom Max (04)	92RH2005	96

# MBK

Skyliner	Skyliner 125 (00>03)	82RH2005	94
	Skyliner 150 (01>03)	82RH2005	94
	Skyliner 250 (00>03)	82RH2005	104
Dodo	Dodo 125 (02>03)	82RH2005	94
	Dodo 150 (02>03)	82RH2005	94
Thunder	Thunder 150 (00>03)	82RH2005	94

# MOTO GUZZI

	Griso 8V - 1200 Sport 4V (All)	92RH2015	84
	Stelvio 4V 1200 cc (All)	92RH2015	84

# PEUGEOT

	125 cc (2 valves)	92RH2005	94
	125 cc (4 valves)	92RH2005	96

# PIAGGIO

Beverly	Beverly 125 (01>03)	92RH2005	96
	Beverly 200 (01>03)	92RH2005	96
	Beverly 500 (03>04)	92RH2010	106
Fly	Fly 150 (05)	92RH2005	94
GTX	GTX 250 (00>02)	92RH2005	102
Hexagon	Hexagon 125 (99>01)	92RH2005	94
	Super Hexagon 125 (01>04)	92RH2005	96
	Hexagon 150 (99>02)	92RH2005	96
	Hexagon 250 (99>02)	92RH2005	102
Liberty	Liberty 50 (00>02)	92RH2005	84
	Liberty 125 (03)	92RH2005	94
	Liberty 125 (98>02)	92RH2005	88
	Liberty 150 (01>03)	92RH2005	94
	Liberty 200 (04>05)	92RH2005	94
Sfera	Sfera 125 (99>00)	92RH2005	88
Skipper	Skipper 150 ST (00>02)	92RH2005	94
Versity	Versity 300 (03>05)	82RH2005	104
Vespa	Vespa 50 ET4 (00>02)	92RH2005	84
	Vespa 125 ET4 (96>00)	92RH2005	88
	Vespa GT 200 L (03>04)	92RH2005	96
X	X9 Amalfi 180 (00>02)	92RH2005	96
	X8 200 (04>06)	92RH2005	96
	X9 500 (01>04)	92RH2005	96
	Zip	Zip 50 (00a02)	92RH2005
	Zip 125 (00>02)	92RH2005	94

# SANYANG



Duke	Duke 100	92RH2005	86	
		92RH2005	84	
	Duke 125	92RH2005	94	
		92RH2005	44	Oil Pump / Pompa Olio
	Duke 150	82RH2005	94	
F	Feihen150, Husky	92RH2005	102	

# SUZUKI

AN	AN125	92RH2005	94	
Burgman	Burgman 200 (06-)	82RH2010	100	
C	C90 1461cc (-06)	82RH2010	142	
DL	DL1000 (02-)	92RH2010	92	
DR	DR250 (82-83)	82RH2015	112	
	DR250 (90-93)	82RH2010	108	
	DR250 R (95-)	92RH2010	128	
	DR250 S (82-89)	82RH2015	112	
	DR250 S (90-)	82RH2010	108	
	DR350, S (90-)	82RH2010	108	
	DR500 (81-88)	82RH2015	124	
	DR600, R (85-89)	82RH2015	124	
	DR600 SE (91-)	82RH2015	124	
	DR650, R (90-)	82RH2015	106	
	DR650 RE/RSE (95-)	92RH2015	120	
	DR750 BIG (87-89)	82RH2015	106	
	DR750 S (88-89)	82RH2015	106	
	DR800 S (90-)	82RH2015	106	
DRZ	DRZ400 (00-03)	82RH2010	128	
	DRZ400 (04-)	82RH2010	128	
FB	FB90 (01-)	92RH2015	90	
	FB90 (90-00)	92RH2015	90	
	FB100 (83-)	82RH2010	100	
FD	FD110 (95-)	92RH2010	90	
	FD110 (99-)	92RH2010	92	
GN	GN250 E (82-)	82RH2015	112	
GR	GR650 (82-)	82RH2015	160	
GS	GS125 (87-93)	82RH2010	100	
	GS150, 125 (08-)	82RH2010	100	
	GS150, 125 (84-86)	82RH2010	100	
GSF	GSF250 (89-)	82RH2010	124	
	GSF400 (95-)	82RH2010	132	
	GSF400 V (95-)	82RH2010	134	
	GSF600 (94-07)	82RH2015	144	
	GSF650 (07-)	82RH2015	142	
	GSF1200 (00-07)	82RH2015	150	
	GSF1250 (07-)	82RH2015	142	
GSR	GSR400 (06-)	82RH2015	120	
	GSR600 (06-)	82RH2015	120	
GSX	GSX250 (95-)	92RH2010	124	
	GSX250 F (91-)	82RH2010	114	
	GSX250 RC (87-89)	82RH2010	114	
	GSX250 S (91-)	82RH2010	114	
	GSX250 SS (91-)	82RH2010	114	
	GSX550, L (83-85)	82RH2015	142	
	GSX1100 G (91-)	82RH2015	150	
	GSX1300 (99-)	82RH2015	156	
	GSX1400 (01-)	82RH2015	156	
GSXR	GSXR250 (86-88)	82RH2010	114	
	GSXR250 R (89-)	82RH2010	114	
	GSXR600 (01-)	82RH2015	120	
	GSXR750 (06)	82RH2015	120	
	GSXR1000 (07-)	82RH2015	130	
GZ	GZ250 (97-)	82RH2015	112	
LC	LC250 (99-)	92RH2005	104	
Let's	Let's4	92RH2005	84	
LS	LS400 L (87-93)	82RH2015	132	
	LS650 L (86-)	82RH2015	132	
LT	LT250 (03-)	82RH2010	106	
	LT250 E (85-86)	82RH2015	112	
	LT300 (86-)	82RH2015	118	
	LT400 (95-)	92RH2015	120	
	LT-A400 F (91-)	82RH2010	108	

# SUZUKI



LT	LT-Z400 (04-)	82RH2010	128	
	LT450 (97-)	92RH2015	124	
	LT500 (04-)	92RH2015	124	
	LT700	82RH2005	60	Primary Drive / Primaria
LX	LX250 (02-)	92RH2010	128	
NJ	NJ4BA (01-)	82RH2015	112	
NZ	NZ250 (86-)	82RH2010	134	
RF	RF600 R (95-)	82RH2015	128	
RMZ	RMZ250 (06-)	92RH2010	114	
	RMZ450 (06-)	82RH2010	124	
RV	RV125 (03-)	92RH2005	100	
SG	SG250 (92-)	82RH2010	108	
Skywave	Skywave 250 (98-06)	82RH2010	108	
		82RH2005	56	Primary Drive / Primaria
	Skywave 400 (98-06)	82RH2010	108	
ST	ST250 (04-))	92RH2010	112	
SV	SV1000 S (03-)	92RH2010	92	
SW	SW-1 (92-)	82RH2015	112	
	Volty (94-)	82RH2015	112	
TL	TL1000 -S (97-)	92RH2015	92	
	TL1000 -R (98-02)	92RH2015	92	
UX	Sixteen 125/150 (07-)	82RH2010	94	
		82RH2005	52	Primary Drive / Primaria
V	V2 1500cc (08-)	82RH2015	140	
Vecstar	Vecstar 125, 150 (94-)	92RH2005	94	
VS	VS750, 700 (85-87)	82RH2015	128	
	VS800 (93-)	82RH2015	128	
	VS800 GL (90-)	82RH2015	128	
	VS1400 LG (87-)	82RH2010	142	
VX	VX800 (90-)	82RH2015	128	
VZR	VZR1800 (05-)	82RH2015	116	Cam Drive Upper / Distribuzione Superiore
		92RH2015	78	Cam Drive Lower / Distribuzione Inferiore
XZ	XZ011 (07-)	82RH2015	146	

# TM

MX/EN/SM	250 (-05)	92RH2010	118	
	250 (05-)	92RH2015	118	
	450 (-05)	92RH2010	124	
	450 (05-)	92RH2015	124	
	530 (-05)	92RH2010	130	
	530 (05-)	92RH2015	130	

# TRIUMPH

	Daytona 675cc (08-)	92RH2015	126	
	Street Triple (08-)	92RH2015	126	
	Tiger 800 (11)	92RH2015	128	
	Bonneville - Speedmaster - Thruxton 865cc (09-)	92RH2015	134	
	America 865cc (07-)	92RH2015	134	
	Scrambler 865cc (09-)	92RH2015	134	
	Speed Triple - Sprint - Tiger 1050cc (08-)	92RH2015	134	
	Thunderbird 1600 cc (All)	92RH2015	142	
	Rocket III 2300cc (07-)	92RH2015	170	

# VOXAN

	All	92RH2015	150	
--	-----	----------	-----	--

**YAMAHA**

**Morse®**

BT	BT1100 (02-)	92RH2015	98	
Bruin	Bruin350 4x4 Automatic	92RH2005	110	
CP	Maxam (05-)	92RH2010	136	
	Mate 50 (99-)	92RH2005	84	
DS	DS11	92RH2015	98	
	DS250 (92-)	92RH2015	110	
	DS400 (95-)	82RH2015	118	
DSC	DSC4 (96-)	82RH2015	118	
	DSC11 (99-)	92RH2015	98	
FJ	FJ1100, R (84-88)	82RH2015	156	
	FJ1200, A (86-)	82RH2015	156	
FJR	FJR1300 (01-)	92RH2015	136	
FX	Nytro	98XRH2010	140	
FZ	FZ250 (85-86)	82RH2010	122	
	FZ400 (97-)	92RH2010	130	
	FZ400 R, N (84-87)	82RH2015	136	
	FZ6 (04-)	92RH2015	120	
	FZ6R (09-)	98XRH2010	120	
	FZ8R (10-)	98XRH2010	124	
	FZ1 (03-)	92RH2015	130	
FZR	FZR250, R, ZEEL (91-)	82RH2010	112	
FZS	FZS1000 Fazer (00-)	92RH2015	130	
Grizzly	Grizzly 450 (08-)	98XRH2010	120	
	Grizzly 660 AUTO 4X4 (04-)	92RH2010	126	
Kodiak	Kodiak 400 AUTO 4X4	92RH2010	116	
	Kodiak 450 AUTO 4X4	92RH2010	116	
MT	MT-09 (2014)	98XRH2010	128	
PHAZER	Phazer (06)	98XRH2015	118	
	Phazer (07-)	98XRH2015	118	
Raptor		660R Raptor (04-)	82RH2015	126
RX	RX1, RX Warrior 1000 (05-)	98XRH2015	130	
	RX1 1000 (04-05)	92RH2015	130	
SRX	SRX250, F (84-)	82RH2015	136	
	SRX600, 400 (91) (91-96)	82RH2015	126	
SZR	SZR660 (96-)	82RH2015	126	
T	T90 (93-)	92RH2005	84	
	T90N (94-)	92RH2005	84	
TDM	TDM900 (02-06)	82RH2015	138	
	TDM1200 (10)	82RH2015	138	
	TDM 1200 (10-) P/N 94591-61150	98XRH2015	150	
T-MAX	T-MAX (01-04) 500 cc	92RH2010	132	
		23RH303.5	82	Primary Drive / Primaria
		89HV302.5RCF	66	ACG Drive / Alternatore
	T-MAX (05-10) 500 cc	92RH2010	132	
		23RH303.5	82	Primary Drive / Primaria
		89HV302.5RCF	66	ACG Drive / Alternatore
	T-MAX (11-) 530cc	92RH2010	134	
Tricker	Tricker 250 (04-)	92RH2005	104	
TRX	TRX850 (95-)	82RH2015	138	
TT	TT250 R (01-)	92RH2005	104	
	TT250 R (93-00)	82RH2010	122	
	TT350 (93-)	82RH2015	136	
	TT600 (89-90)	82RH2015	126	
	TT600 S (90-)	82RH2015	126	
TTR	TTR250 (01-)	82RH2010	122	
V Max	VMax 1200 (08-)	92RH2015	134	
V Star	V Star1100	92RH2015	98	
	V Star Silverado (650 cc)	82RH2015	118	
	V Star1300	98XRH2010	132	
WR-F	WR450 F (04-)	98XRH2010	118	
	WR250 F (07-)	92RH2010	114	
	WR250 F (01-06)	92RH2010	114	
XC	XCity125 (07-)	92RH2005	88	
	XC125, T (91-)	82RH2005	88	
	XC150LC, LCS (90-)	82RH2005	100	
XJ	XJ400, D, Z, ZS, ZE (80-84)	82RH2015	136	
	XJ400, S, L (91-) Diversion	82RH2010	144	
	XJ600 S (91-)	82RH2010	144	
	XJ6 Diversion (09-)	98XRH2010	120	
	XJ900 (94-) Diversion	82RH2015	150	
XJR	XJR400 (90-)	82RH2010	144	
	XJR400 R (93-)	92RH2010	130	
	XJR1200 (94-)	82RH2015	156	
	XJR1300 (07-)	82RH2015	156	
	XJR1300 (98-)	82RH2015	156	



**YAMAHA**

**Morse®**

MAKE AND SERIES MARCA E SERIE	MODEL & YEAR MODELLO & ANNI	MORSE CHAIN CATENA MORSE	LINKS MAGLIE	DRIVE (TIMING IF BLANK) TRASMISSIONE (DISTRIBUZIONE SE NON INDICATO)
XT	XT225 Serrow 225WE (00-04)	92RH2005	104	
	XT250 (80-81)	82RH2015	136	
	XT250 T (83-87)	82RH2015	136	
	XT350 (80-81)	82RH2015	136	
	XT550, 500, 400, E (81-87)	82RH2015	126	
	XT600, C, Z (84-88)	82RH2015	126	
	XT600 E (85-)	82RH2015	126	
	XT660R (03-)	98XRH2010	126	
	XTZ	XTZ650 (88-89)	82RH2015	138
XTZ	XTZ660Z (90-)	82RH2015	126	
	XTZ750 (88-)	82RH2015	138	
XV	XV400 (89-)	82RH2015	118	
	XV535, 500 (81-)	82RH2015	118	
	XV750, D, E, 700, C, S (80-)	82RH2015	98	
	XV1000, R (82-85)	82RH2015	98	
	XV1100 (81-)	82RH2015	98	
	XV920J (80-82)	82RH2015	98	
	YB	YB-1 Four 50 (00-)	92RH2005	84
YD	YD100 (02-)	92RH2005	86	
YFM	YFM350 (03-)	92RH2005	110	
	YFM600 5KM(01-)	92RH2010	126	
	YFM600 5LV(01-)	82RH2015	126	
	YFM660 R(05-)	82RH2015	126	
	YFM700 FWAD Grizzly (07-)	98XRH2010	126	
YP	Majesty 125 (98-)	82RH2005	94	
	Grand Majestic 250 (05-)	92RH2010	136	
YZ	YZ250 F (01-13)	92RH2010	114	
	YZ250 F (14)	98XRH2010	114	
	YZ400 F (98-02)	92RH2010	120	
	YZ400 F (03-)	98XRH2010	118	
	YZ450 F (04-08)	98XRH2010	118	
YZF-R	YZ450 F (09-)	98XRH2010	122	
	YZF-R6 (98-05)	92RH2015	120	
	YZF-R6 (06-08)	98XRH2015	118	
	YZF-R1 (98-03)	92RH2015	130	
	YZF-R1 (04-06)	98XRH2020	122	
	YZF-R1 (07-08)	98XRH2020	124	
	YZF-R1 (09-)	98XRH2020	126	



MORSE SILENT CHAIN GUIDE  
GUIDA APPLICATIVA MORSE



# 23RH303.5



23RH303.5    82    Yamaha    T-MAX (01-10) 500cc    Primary Drive / Primaria

# 82RH2005

82RH2005	52	Suzuki	Sixteen 125/150 (07-)	Primary Drive / Primaria
82RH2005	56	Suzuki	Skywave 250 (98-06)	Primary Drive / Primaria
82RH2005	60	Suzuki	LT700	Primary Drive / Primaria
82RH2005	82	Honda	TACT IVY (86-88)	
82RH2005	88	Yamaha	XC125, T (91-)	
82RH2005	94	Honda	CH150F, G, 125 (84-)	
		Malaguti	Madison 125/150 (01>03)	
		MBK	Skyliner 125 (00>03), Skyliner 150 (01>03), Dodo 125/150 (02>03), Thunder 150 (00>03)	
		Sanyang	Duke 150	
		Yamaha	Majesty 125 (98-)	
82RH2005	96	Daelim	NF100	
82RH2005	98	Daelim	VL125	
		Honda	CH250 E, F, G (83-92)	
82RH2005	100	Daelim	VX125, VC125	
		Honda	GL125 (84-)	
			NX125/150 (88-)	
		Yamaha	XC150LC, LCS (90-)	
82RH2005	102	Honda	CBX200 (92-)	
			NX200 (92-)	
			XR200R (92-)	
82RH2005	104	Aprilia	Leonardo 250 ST (04), 300 ST (05)	
		Malaguti	Madison S-250 (02>03)	
		MBK	Skyliner 250 (00>03)	
		Piaggio	Versity 300 (03>05)	
82RH2005	106	Kawasaki	ZR250 A1-A9 (91-01), B1-B9 (97-06), ZR250 C1-C3 (02-04), D1-D2 (03, 04)	
			ZX250 A1, 2 (89-96), B1, B2 (89-90), ZXR250, ZX250 C1-8 (91-95, 97-00), D1, D2 (91-92)	
82RH2005	110	Malaguti	Madison K-400 (03>04)	

# 82RH2010

82RH2010	54	Honda	GL1500 (87-93)	Oil Pump / Pompa Olio
82RH2010	58	Honda	ST1100 (89-93)	Oil Pump / Pompa Olio
82RH2010	70	Honda	NV400 (93-)	Oil Pump / Pompa Olio
			NV650 (87-93)	Oil Pump / Pompa Olio
			NT650, 400 (90-93)	Oil Pump / Pompa Olio
			NTV650 (92-)	Oil Pump / Pompa Olio
			VT600 (00-)	Oil Pump / Pompa Olio
			VRX (95-00) Roadstar	Oil Pump / Pompa Olio
			XL400 (84-93)	Oil Pump / Pompa Olio
			XL600 (85-93)	Oil Pump / Pompa Olio
82RH2010	72		HondaXR750 (89-)	Oil Pump / Pompa Olio
82RH2010	92	Hyosung	KR110	
82RH2010	94	Suzuki	Sixteen 125/150 (07-)	
82RH2010	100	Hyosung	TN125, GS125, GA125	
		Suzuki	Burgman 200 (06-)	
			FB100 (83-)	
			GS125/150 (84-86), GS125 (87-93), GS125/150 (08-),	
82RH2010	102	Kawasaki	KLF185 A1-4 (85-88)	
			LT150 A (84-87), LT160 A1 (85), LT185 A1-A2 (86-87)	
82RH2010	106	Kawasaki	KLF220 A1-A15 (88-02), B1 (01), KLF250 A1-3 (03-06)	
		Suzuki	LT250 (03-)	
82RH2010	108	Suzuki	DR250 (90-93), DR250S (90-)	
			DR350, S (90-)	
			LT-A400 F (91-)	
			SG250 (92-)	
			Skywave 250/400 (98-06)	
82RH2010	110	Honda	TRX300, FW, 250 XH (86-93)	
82RH2010	112	Honda	XR400 (95)	
		Yamaha	FZR250, R, ZEEL (91-)	
82RH2010	114	Suzuki	GSX250 F (91-), GSX250 RC (87-89), GSX250 S,SS (91-)	
			GSXR250 (86-88), GSXR250 R (89-)	
82RH2010	118	Honda	GB400/500 (87-)	
			NT650, 400 (90-93)	
			NTV650 (92-)	
			NV400 (93-)	

**82RH2010**

82RH2010	118	Honda	NV650 (87-93) NX650, 500 (88-) VT600 C (87-93) VRX (95-00) Roadstar XBR500 (87-88) XL400 (84-93) XL600 (85-93) XLV750 v (83-86) XR600 R (87-) XRV750 (89-)	
		Kawasaki	KLF400 A1 (92); KLF400 B1-7 (93-99) KVF360 4X4 A1-A3 (03-06), B1-B3 (03-06), C1-C3 (03-06) KVF400 A1-A 2 (97-98), B1 (98), C1c (99-02), D1-d4 (99-02) ZX400 G1-G2 (88-89), H1-H2 (89-90), J1-J2 (89-90) (ZXR400)	
82RH2010	120	Honda	CB1 400 (89-91)	
82RH2010	122	Kawasaki	BJ250 A1-3 (92-95), B1-7 (92-99), C1-11 (95-06), D1-10 (96-06) BJ250 E1-4 (96-99), F1-4 (02-05), G1-3 (02-04), H1 (02)	
		Yamaha	FZ250 (85-86) TT250 R (93-00) TTR250 (01-)	
82RH2010	124	Kawasaki	EL250 A1-A6 (87-90-94-96), B1-B3 (87-90), C1-C6, C8 (89-96-98), D1-D5, D7 (90-94-96) EL250 E1-E4 (91-94), F2-F6 (96-97-99-01-03) EX250 E1, E2 (86-87), F1-F19 (87-06), G1 (88), H1-H16 (90-06) KLE250 A1-6 (93-95-97-99-01) KLE250	
		Suzuki	GSF250 (89-) RMZ450 (06-)	
82RH2010	126	Honda	NX250 (87-)	
82RH2010	128	Gas Gas	450cc (All)	
		Honda	VT250 (86-93) XELVIS(94-)	
		Suzuki	DRZ400 (00-04) LT-Z400 (04-)	
82RH2010	130	Honda	CB500 (93-)	
82RH2010	132	Suzuki	GSF400 (95-)	
82RH2010	134	Suzuki	GSF400 V (95-) NZ250 (86-)	
82RH2010	136	Kawasaki	ZL400 A1, A2 (86-87), B1-B3 (88-90), C1-C3 (88-90), D1-D2 (94-95) Eliminator400 ZL500 A1, A2 (86-87), B (88-90) ZL600 A1, 2 (86-87), B1, 2, 3 (95-97), 500 A1, 2 (86-87) ZX400 D1-4 (85-89) GPZ400 R, ZX400 E1-5 (86-90) FX400 R, ZX400 F1 (87) ZX500 A1, 2, 3 (85-87) GPZ500 R, ZX500 B1, 2, 3 (88-90) GPX500 R ZX600 A1-A5 (85-89), ZX600 B1 (87), ZX600 C1-10 (88-97) GPZ600 R	
82RH2010	142	Suzuki	C90 1461cc (-06) VS1400 LG (87-)	
82RH2010	144	Yamaha	XJ400, S, L (91-) Diversion XJR400 (90-) XJ600 S (91-)	
82RH2010	158	Kawasaki	BR250 A 1, 2 (86-87), BR250 B1 (86) KL250 D2 -22 (84-05) KLR250, KL250 E1, 2 (86-87), KL250 F (88) KSF250 A1 - 18 (87-04)	

**82RH2015**

82RH2015	72	Honda	CBX750 F, 700 F (83-89)	ACG / Alternatore
82RH2015	82	Honda	CB750 F (78-82), CB750 K, P, L (78-80) CB900 F (78-81) CB1100 R (80-83) CBX1000 (78-79)	Cam Drive Upper / Stadio Superiore Cam Drive Upper / Stadio Superiore Cam Drive Upper / Stadio Superiore Cam Drive Upper / Stadio Superiore
82RH2015	94	Honda	CA125 Rebel (95-00) CB125 (87-) CD125 (87-) CM125 (87-)	
82RH2015	98	Honda	CA250 Rebel (88-) CB250 Nightawk (90-) CD250 (88-) CM250 C (81-87) CMX250 (83-) 1440 1-KB4-6700 -M1	
		Yamaha	XV750, D, E, 700, C, S (80-) XV1000, R (82-85) XV1100 (81-) XV920J (80-82)	
82RH2015	100	Honda	XL200R (83-87) XR200, RE (83-87)	
82RH2015	102	Honda	XL250 R (83-87)	

# 82RH2015



Model	Links	Make	Model & Year	Drive / Transmission
82RH2015	102	Honda	XLR250, R (91-) Baja	
			XLX250 R (83-87)	
		Kawasaki	XR250 R (83-85 - 91)	
			ER250 A1 (83), ER250 B1-3 (83, 84, 88)	
82RH2015	104	Honda	EX250 C1-3, 5 (83-85-87), EX250 D1 (83)	
			EX305 A1 (83), EX305 B1-10 (83-94) GPZ305	
82RH2015	106	Suzuki	CB250 RS (78-83)	
			XL250 S (78-81)	
82RH2015	108	Honda	DR650, R (90-)	
			DR750 BIG (87-89), DR750 S (88-89)	
			DR800 S (90-)	
82RH2015	110	Honda	CB250 (77-83), CB250 T, TZ (80-84)	
			CBX250 RS (83-86)	
			GB250 (83-)	
			NX350 (91-)	
82RH2015	112	Honda	XL350 (83-87)	
			XR350 (83-)	
		Suzuki	ATC250, E, S, F (84-87)	
			CB450, 400 (78-82)	
82RH2015	114	Honda	CBR450 (88-)	
			CM450, 400 T (80-87)	
		Kawasaki	CB650 F, Z, PZ (78-82)	
			DR250 (82-83), DR250 S (82-89)	
82RH2015	116	Honda	GN250 E (82-)	
			GZ250 (97-)	
82RH2015	118	Honda	LT250 E (85-86)	
			NJ4BA (01-)	
		Suzuki	SW-1 (92-)	
			Volty (94-)	
82RH2015	120	Honda	TRX350H, UH (84-86)	
			Kawasaki	KZ400 B, G (80-81), KZ400 H (80-83), KZ400 R (82-83), KZ400 T (83-84), KZ400 V (82)
		Suzuki	KZ440 A (80-83), B, C (80-84), D (80-84), F (82), G (82-83), H (82-84)	
			NV400 (82-87)	
82RH2015	122	Honda	VZR1800 (05-)	Cam Drive Upper / Stadio Superiore
			XBR500 S, 400 (84-88)	
		Suzuki	XL600 R, 400 R (85-87)	
			XR500 R, RE, 400 (82-84-91)	
82RH2015	124	Honda	LT300 (86-)	
			DS400 (95-)	
		Suzuki	DSC4 (96-)	
			V Star Silverado (650 cc)	
82RH2015	126	Honda	XV400 (89-)	
			XV535, 500 (81-)	
		Suzuki	CB400 F2 (92-93)	
			CBX1000 (78-79)	Cam Drive lower / Stadio Inferiore
82RH2015	128	Honda	FT500, 400 (78-83)	
			XL500 S, 400 (78-83)	
		Suzuki	GSR400 (06-)	
			GSR600 (06-)	
82RH2015	130	Honda	GSXR600 (01-)	
			GSXR750 (06)	
		Suzuki	Canyon 600 (96-98), River 600 (95-97),	
			DR500 (81-88)	
82RH2015	132	Honda	DR600, R (85-89), DR600 SE (91-)	
			CB900 F (78-81)	Cam Drive lower / Stadio Inferiore
		Suzuki	CB1100 R (80-83)	Cam Drive lower / Stadio Inferiore
			CBR600 F (86-89)	
82RH2015	132	Honda	CBX600 (86-)	
			660R Raptor (04-)	
		Yamaha	SRX600, 400 (91) (91-96)	
			SZR660 (96-)	
82RH2015	132	Honda	TT600 S (90-), TT600 (89-90)	
			XT550, 500, 400, E (81-87)	
		Suzuki	XT600, C, Z (84-88), XT600 E (85-)	
			XTZ660Z (90-)	
82RH2015	132	Honda	YFM600 5LV(01-), YFM660 R(05-)	
			NV750 (82-85)	
		Suzuki	PC800 (93-)	
			RF600 R (95-)	
82RH2015	132	Honda	VS750, 700 (85-87)	
			VS800 (93-), VS800 GL (90-)	
		Suzuki	VX800 (90-)	
			CBR400 F1, F2(83-86)	
82RH2015	132	Aprilia	CBX400 F1, F2 (81-86)	
			GSXR1000 (07-)	
82RH2015	132	Aprilia	ETX600 Tuareg (86)	

# 82RH2015



Model	Links	Make	Model & Year	Drive	
82RH2015	132	Aprilia	Pegaso 600 (90-91)		
			Pegaso 2 (93-96), Pegaso 3 (97-02)		
			Rally 600 (86-87)		
			Wind 600 (86-91)		
			Pegaso 650 (92)		
			Kawasaki	ZR400 E1-10 (94-06), ZR400 F1-10 (95-06), ZR400 H1 (97), ZR400 J1 (03) ZRX	
			ZX400 K1-3 (90-92) ZZ-R400, ZX400 N1-11 (93-06) ZZ-R400		
			ZX500 C1-3 (90-92) ZZ-R500, ZX500 D1-4 (93-96) ZZ-R500		
			ZX600 D1-4 (90-93) ZZ-R600, ZX600 E1-13 (93-06) ZZ-R600		
			Suzuki	LS400 L (87-93)	
	LS650 L (86-)				
82RH2015	134	Honda	CBX550 F1, F2 (81-84)		
82RH2015	136	Honda	VT1100 C (84-93)		
		Yamaha	FZ400 R, N (84-87)		
			SRX250, F (84-)		
			TT350 (93-)		
			XJ400, D, Z, ZS, ZE (80-84)		
			XT250 (80-81), XT250 T (83-87)		
		XT350 (80-81)			
82RH2015	138	Kawasaki	ZX750 F1-4 (87-90) GPX750 R, ZX750 H1, 2 (89-90) ZXR750		
		Yamaha	TDM900 (02-06)		
			TDM1200 (10)		
			TRX850 (95-)		
			XTZ650 (88-89)		
			XTZ750 (88-)		
82RH2015		140	Honda	CBX550 C (82-84)	
			Kawasaki	KZ400 E3, 4, K2, 3 (81-82), KZ400 J2, 3, 4 (81-83), KZ400 L (81), KZ400 M1, 2 (82-83)	
				KZ500 A (79-80), KZ500 B3, 4 (81-82) KZ500 M (83)	
				KZ550 A2-A4 (81-82), B2-B3 (81-83), C2-C4 (81-83), D1 (81), E1-E2 (81-82), F1-F3 (83-85)	
			KZ550 H1-H2 (82-83), N1, M1 (83)		
			KZ1000 F (79)		
			ZR400 A1 (83), ZR400 B1 (84), ZR400 C1-7 (89-95) Zephyr		
			ZR500 A1 (83)		
			ZR550 A1, 2 (83-84), ZR550 B1-9 (91-98) Zephyr		
			ZX400 A1-5 (83-87), ZX400 B (84), ZX400 C1-5 (84-85-87-91-94) GPZ400 F, F2 GPZ400		
		ZX550 A1-6 (84-89)			
		Suzuki	V2 1500 cc (08-)		
82RH2015	142	Suzuki	GSF650 (07-)		
			GSF1250 (07-)		
			GSX550, L (83-85)		
82RH2015	144	Honda	CBX650 E (82-87)		
		Suzuki	GSF600 (94-07)		
82RH2015	146	Honda	CBX750 F, 700 F (83-)		
			NSA750 (92-)		
		Suzuki	XZ011 (07-)		
82RH2015		148	Honda	VF750 S (81-86)	
	Kawasaki		AF450 A1 (88), AF450 B1 (88)		
			EN400 A1-4 (85-87-90), EN400 B1-3 (90-93), EN400 C1, 2 (94-95)		
			EN450 A1-6 (85-90) 450 Ltd		
			EN500 A1-7 (90-96), EN500 B1, 2 (94-95), EN500 C1-10 (96-06) EN500 Vulcan 500 Ltd		
			ER500 AB1-4 (97-00), C1-5 (01-05), D1-2 (01-03) ER-5		
			EX400 A1-4 (87-90) GPZ400 S, EX400 B1, 2 (94-95), EX400 C (94-)		
			EX500 A1-7 (87-93), EX500 B1-6 (88-93), EX500 B1-6 (88-93), EX500 C1 (92),		
			EX500 D1-12 (94-06), E1-10 (94-03), F1-3 (94-96) Ninja500, GPZ500 S		
			KAF450 A (88), KAF450 B (88-)		
			KLE400 A1-6 (91-95-99) KLE400		
			KLE500 A1-13 (91-03) B(04-06) KLE500		
82RH2015	150		Honda	CB1000, T2 (92-)	
				CBR1000 F (86-00)	
			Kawasaki	KZ650 A, B, C (80-83), D 4 (81), KZ650 E, F2-4 (81-83), H1-3 (81-83), J (80-83)	
			KZ700 A (84)		
			KZ750 A (83-86), E2, 3, H2, 3 (81-82), L1-4 (81-84)		
			KZ750 N1, 2, (82-83), P1-7, 9 (82-85, 87-88, 92, 94), V (82), R1(82) GT750		
			ZN700 A1, 2 (84-85)		
			ZR750 A1, 2 (84-85), C1-10 (91-95-99-06), D1-6 (96-02), E1 (97) F1-5 (99-03), H1-5 (01-05)		
			ZX750 A1, 2, 3, 5 (83-85-87), ZX750 E1, 2 (84-85) GPZ750		
		Suzuki	GSF1200 (00-07)		
		GSX1100 G (91-)			
		Yamaha	XJ900 (94-) Diversion		
82RH2015	152	Kawasaki	KZ1000 J1-3 (81-83), K1, 2, M1, 2 (81-82), L (81), P1-24 (82-05) R1-R2 (83)		
			KZ1100 B1, 2 (81-82), D1, 2 (82-83), D1, 2 (82-83), K, L1 (83), R1 (84)		
			ZN1100 B1 (83), ZX1100 B1 (83) GPZ1100 F		
			ZX1100 A1-3 (83-85) GPZ1100 F		
82RH2015	154	Honda	VF1100 C (82-84)		
82RH2015	156	Suzuki	GSX1300 (99-)		
			GSX1400 (01-)		
		Yamaha	FJ1100, R (84-88)		
			FJ1200, A (86-)		

# 82RH2015



		Yamaha	XJR1200 (94-)	
			XJR1300 (07-)	
82RH2015	158	Kawasaki	KZ1100 A1, 4 (81-84)	
			KZ1200 A, B (79)	
			KZ1300 A1, 3 (79-81), KZ1300 A3, 5 (81-83), KZ1300 B (80-81)	
			ZG1300 A1-5 (84-89)	
			ZN1300 A1-6 (83-88)	
82RH2015	160	Suzuki	GR650 (82-)	
82RH2015	172	Kawasaki	KL600 A1-5 (84-85-88-90) KLR600, KL600 B1-9 (85-94)	
82RH2015	174	Kawasaki	KL500 A1-3 (87-89), KL500 B1-3 (89-91) Tengai	
			KL650 A1-8 (87-06) KLR650, KL650 B1-4 (89-92) Tengai	

# 89HV302.5RCF

89HV302.5RCF	66	Yamaha	T-MAX (01-10) 500 cc	ACG / Alternatore
--------------	----	--------	----------------------	-------------------

# 92RH2005

92RH2005	46	Honda	TRX230 (97-)	Oil Pump / Pompa Olio
92RH2005	48	Honda	VTR1000 F(97-)	Oil Pump / Pompa Olio
92RH2005	52	Aprilia	Dorsoduro, Shiver 1200 (10-)	Water Pump / Pompa Acqua
		Honda	CBR1000 XX (03)	Oil Pump / Pompa Olio
			VTX1301	Oil Pump / Pompa Olio
92RH2005	54	Honda	NSS300 FORZA (13- )	Oil Pump / Pompa Olio
92RH2005	62	Honda	GL1800 (01-)	Oil Pump / Pompa Olio
92RH2005	64	Honda	NSA700 A (08-)	Oil Pump / Pompa Olio
92RH2005	68	Honda	CBR900 RR (04-)	Oil Pump / Pompa Olio
92RH2005	70	Honda	ST1100 (02-)	Oil Pump / Pompa Olio
92RH2005	72	Honda	CBR1000 RR (08-)	Oil Pump / Pompa Olio
92RH2005	80	Honda	CB50 (03-)	
		Kawasaki	ZX1000 (11-) ZX-10R	Oil Pump / Pompa Olio
92RH2005	82	Honda	50cc 4 cycle Scooter (01-)	
92RH2005	84	Piaggio	Liberty 50 (00-02), Vespa 50 ET4 (00-02), Zip 50 (00-02)	
		Sanyang	Duke 100	
		Suzuki	Let's4	
		Yamaha	Mate 50 (99-)	
			T90 (93-), T90N (94-)	
			YB-1 Four 50 (00-)	
92RH2005	86	Honda	CH80 (03-)	
		Sanyang	Duke 100	
		Yamaha	YD100 (02-)	
92RH2005	88	Honda	Dio (03-)	
		Piaggio	Liberty 125 (98>02), Sfera 125 (99>00), Vespa 125 ET4 (96>00)	
		Yamaha	XCity125 (07-)	
92RH2005	90	Daelim	SL125	
92RH2005	92	Honda	Biz125 (05-)	
92RH2005	94	Honda	CH125 (93-)	
			XL125V Varadero (01-04)	
		Peugeot	125 cc (2 valves)	
		Piaggio	Fly 150 (05), Liberty 150 (01>03), Skipper 150 ST (00>02)	
			Hexagon 125 (99>01), Liberty 125 (03), Zip 125 (00>02)	
			Liberty 200 (04>05)	
		Sanyang	Duke 125	
		Suzuki	AN125	
			Vecstar 125, 150 (94-)	
92RH2005	96	Aprilia	Leonardo 125 (95-96), Scarabeo 125 (00-02)	
			Leonardo 150 (97), Scarabeo 125 (00-02)	
			Atlantic 200 (04), Scarabeo 200 (00-03), Scarabeo 200 GT (04), Sportcity 200 (04-05)	
		Gilera	Runner 200 (04)	
		Malaguti	Madison S-200 (04)	
			F12 200 Phantom Max (04)	
		Peugeot	125 cc (4 valves)	
		Piaggio	Beverly 125 (01>03), Super Hexagon 125 (01>04)	
			Hexagon 150 (99>02)	
			X9 Amalfi 180 (00>02)	
			Beverly 200 (01>03), Vespa GT 200 L (03>04), X8 200 (04>06)	
			X9 500 (01>04)	
92RH2005	100	Hyosung	MS1-125	
		Suzuki	RV125 (03-)	

## 92RH2005

92RH2005	102	Honda	GLS200 (97-)
		Piaggio	GTX 250 (00>02), Hexagon 250 (99>02)
		Sanyang	Feihen150, Husky
92RH2005	104	Honda	CMX250 1440 1-KFB-7510-M
			CRF230M (08-)
			NSS300 FORZA (13- )
			SL230 (02-)
		Suzuki	LC250 (99-)
		Yamaha	Tricker 250 (04-)
92RH2005	110	Yamaha	TT250 R (01-)
			XT225 Serrow 225WE (00-04)
			Bruin350 4x4 Automatic
92RH2005	124	Hyosung	YFM350 (03-)
92RH2005	124	Hyosung	GV125

## 92RH2010

92RH2010	52	Kawasaki	JT1200 B1, 2 (03-04), D1 (05-06) Jet Sky STX-12F	Oil Pump / Pompa Olio
			JT1500 A1, 2 (04-05) Jet Sky STX-15F	Oil Pump / Pompa Olio
92RH2010	56	Honda	TRX500 (04-)	
92RH2010	58	Kawasaki	KFX700 V Force	Primary Drive / Primaria
			KSV700 A (04-06) KXF700 V Force, KSV700 B (04-06) KXF700 V Force	Primary Drive / Primaria
			KVF650 A1, 2 (01-03), B1, 2 (02-03), C1 (04), D-E (05-06), F-G (06)	Oil Pump / Pompa Olio
92RH2010	60	Honda	KVF700 A1, 2 (04-06), KVF700 B1, 2 (04-05), C1, 2 (04-05)D1 (05-06) KVF700 4X6	Oil Pump / Pompa Olio
			TRX300 (13- )	
			TRX400 (07)	
92RH2010	80	Honda	CB50V (97-)	
92RH2010	82	Aprilia	RXV/SXV 450 , 550	
		Kawasaki	KLX650 A1-3 (93-95), B1-3 (93-95), C1-4 (93-96) KLX650	Cam Drive lower / Stadio Inferiore
92RH2010	90	Honda	KL650 D1-6 (96-97-99-01) KLX650 R	Cam Drive lower / Stadio Inferiore
		Suzuki	RTL250 (04-)	
92RH2010	92	Kawasaki	FD110 (95-)	
			KVF650 A1, 2 (01-03), B1, 2 (02-03), C1 (04), D/E (05-06), F/G (06)	Cam Drive Upper / Stadio Superiore
		Suzuki	KVF700 A1, 2 (04-06), B1, 2 (04-05), C1, 2 (04-05)D1 (05-06)	Cam Drive Upper / Stadio Superiore
92RH2010	94	Kawasaki	DL1000 (02-)	
			FD110 (99-)	
			SV1000 S (03-)	
92RH2010	98	Honda	AN120 (98-)	
92RH2010	98	Honda	NSS250 Forza (04-)	
			GA125F	
92RH2010	102	Honda	XR250 (95-)	
			Kawasaki	BN125 A1, 2 (98-06) Eliminator 125, BN125 A3-8 (00-05) Eliminator 125
			BN175 A1 (98), A2-8 (99-05), B1 (00), C1 (01), D1 (02), E1-3 (03-05) Eliminator 175	
92RH2010	106	Aprilia	BP175 A1 (00)	
			BR150 A1 (96)	
			Scarabeo 500 (04), Atlantic 500 (02-04)	
92RH2010	110	Honda	Nexus 500 (04)	
			Piaggio	Beverly 500 (03>04)
92RH2010	112	Honda	TRX650 FA (02-), TRX650 (06-)	
92RH2010	114	Kawasaki	CL400 X (98-)	
			Suzuki	NX400 (01-)
			ST250 (04-)	
92RH2010	116	Yamaha	KX250 (06-)	KX250 F, KX250 N1, 2 (04-05), P1, 2 (04-05) KX250 F
			Suzuki	RMZ250 (06-)
			Yamaha	WR250 F (01-)
92RH2010	118	Honda	YZ250 F (01-13)	
			Kodiak 400 AUTO 4X4	
			Kodiak 450 AUTO 4X4	
92RH2010	120	Honda	NSA700 A (08-)	
			NT700 VA Deauville	
			NX650 (95-)	
92RH2010	122	Kawasaki	VT750 C, C2	
			XL650 V (00-)	
			ZR400 D1-4 (92-95) Xanthus	
92RH2010	124	Hyosung	ZX400 L1-9 (91-99), M1-6 (91-95-99) ZXR400, ZX400 M (91-93) ZXR400 R	
			250 (-05)	
			CB400 (94-98)	
92RH2010	122	Honda	TRX700 (08-)	
			YZ400 F (98-02)	
92RH2010	122	Kawasaki	CB600 F Hornet ('14- )	
			XR650 (02-)	
92RH2010	124	Hyosung	KL250 G1-9 (97-05), H1-9 (97-06) Supersherpa, J1-3 (00-03-05), K1 (03) Stockman 250	
			VN250 A1-6 (98-04), C1, 2 (00-06), VN250 B1-4 (00-02-04) Eliminator 250 V	
92RH2010	124	Hyosung	GV250	



## 92RH2010

Morse®

92RH2010	124	Kawasaki	EX250 A/B (13-) Ninja 250	
			EX300 A/B (13-) Ninja 300	
			VN400 A1-5 (95-99), B1-5 (95-99), C1-8 (96-03), D1-4 (99-02), E1 (01) VN400 Vulcan, Drifter	
			VN800 A1-11 (95-05), B1-10 (96-06), C1, 2 (99-00), E1-5 (00-05) VN800 Classic, Drifter	
			VN900 B (06-) VN900	
92RH2010	126	Honda	ZX250 (08-12)	
			Suzuki	GSX250 (95-)
92RH2010	128	TM	450 (-05)	
		Yamaha	CB400 (99-)	
		Yamaha	CBX250 (02-)	
92RH2010	128	Kawasaki	Grizzly 660 AUTO 4X4 (04-)	
			YFM600 5KM(01-)	
			KLX250 D, E, F (95-), G1, 2 (94-95), D1-4 (93-96), E1-5 (95-99) KLX250 R	
			KLX250 F1-4 (94-97), H1-7 (98-06), J 1-7 (98-04) KLX250 ES D-Tracker	
			KLX250 K (01), L1-3 (02-04), M1, 2 (04-06), N1, 2 (04-05) KLX250 D-Tracker	
92RH2010	130	TM	KLX300 A1-10 (96-06), B1-7 (97-03) KLX300R	
			Suzuki	DR250 R (95-)
				LX250 (02-)
92RH2010	132	Yamaha	530 (-05)	
			Yamaha	FZ400 (97-)
92RH2010	134	Yamaha	XJR400 R (93-)	
			Yamaha	T-MAX (01-10) 500 cc
92RH2010	136	Yamaha	T-MAX (11-) 530cc	
			Yamaha	Maxam (05-)
92RH2010	138	Honda	Grand Majestic 250 (05-)	
				FJS600 (01-)
				ST1100 (02-)
92RH2010	144	Kawasaki	Silver Wing 400	
			Hyosung	GT650
			VN1500 A1-13 (87-99), B1-6 (87-92), C1-4 (94-97) Vulcan 1500	
			VN1500 E1-7 (98-04), N1-4 (00-02-06) F(06-), F1-2 (98-99), G1-3 (98-01), Vulcan1500	
			VN1500 H1, 2 (98-99), J1-2, L1-5 (00-04) (99-00), P1-2 (02-03, R1-5 (01-05)) Vulcan 1500	
			VN1600 A1-3 (03-06) E(06) VN 1600 Classic	
			VN1600 B1, 2 (04-05), C1, 2 (04, 05), D1 (05) VN1600 ES	

## 92RH2015

92RH2015	46	Kawasaki	KVF650 A1, 2 (01-03), B1, 2 (02-03), C1 (04) KVF650 4X5	Cam Drive lower / Stadio Inferiore
			KVF650 D/E (05-06) F/G (06) KVF651	Cam Drive lower / Stadio Inferiore
			KVF700 A1, 2 (04-06), B1, 2 (04-05), C1, 2 (04-05), D1 (05-06) KVF700 4x5	Cam Drive lower / Stadio Inferiore
92RH2015	52	Honda	TRX230 (97-)	
92RH2015	56	Honda	TRX400 (95-06)	
92RH2015	78	Suzuki	VZR1800 (05-)	Cam Drive lower / Stadio Inferiore
92RH2015	84	Moto Guzzi	Griso 8V - 1200 Sport 4V (All)	
			Stelvio 4V 1200 cc (All)	
			Adventure 950 (03>06), Duke 950 (04), Supermoto 950 (05>06), Superduke 990 (05>06)	
92RH2015	88	KTM	FB90 (90-00)	
92RH2015	92	Cagiva	Raptor 1000 (00-03)	
			Suzuki	TL1000 -S (97-)
92RH2015	94	Kawasaki	TL1000 -R (98-02)	
			KLX650 A1-3 (93-95), B1-3 (93-95), C1-4 (93-96) KLX650	Cam Drive Upper / Stadio Superiore
			KL650 D1-6 (96-97-99-01) KLX650 R	Cam Drive Upper / Stadio Superiore
92RH2015	96	Honda	CRF150R (*12-)	
92RH2015	98	Yamaha	BT1100 (02-)	
			DS11, DSC11 (99-)	
			V Star1100	
92RH2015	104	Honda	CRF250 R (04-08)	
92RH2015	106	Honda	CRF250 R (09-)	
92RH2015	108	KTM	SX-F 250 (09-13)	
			EXC-F 250 (09-13)	
			EXC-F400 (09-11)	
92RH2015	110	KTM	EXC-R 450 (08-12)	
			DS250 (92-)	
			Dorsoduro, Shiver 750 (07-)	
92RH2015	112	Aprilia	CRF250 (02-03)	
			Honda	CRF450 R (04-07) P/N 1440 1-MEB-6710-M1
			Dorsoduro, Shiver 1200 (10-)	
92RH2015	114	Aprilia	TRX450 R (04-)	
			Honda	FE570 (09-12)
			Husaberg	XC-R530 (08-11)
92RH2015	116	Honda	CB600 F (97-)	
			CBR600 (03-)	
			CBR600 F (90-95)	
92RH2015	118	TM	250 (05-)	

## 92RH2015

92RH2015	120	Honda	VFR1200 (09-)
		Suzuki	DR650 RE/RSE (95-) LT400 (95-)
		Yamaha	FZ6 (04-) YZF-R6 (98-05)
92RH2015	122	BMW	G450 X (All)
		Kawasaki	ZX600 F1-3 (95-97) ZX-6R ZX600 J1-4 (00-02-05) ZX-6RR ZX636A1 (02) ZX-6R
92RH2015	124	Honda	CBR900 RR (00-)
		Suzuki	LT450 (97-) LT500 (04-)
92RH2015	126	TM	450 (05-)
		Honda	CBR900 RR (91-99) CBR954RR (02-04) CBR1000 RR (06-07)
92RH2015	128	Kawasaki	ZR750 J1, 2 (04-06) , K1 (05-06), L/M (07-12), N/P(07-12) Z750, Z750 S ZR800 A/B(13-) ZR800 ZX900 C1, 2 (98-99), E1, 2 (00-01), F1, 2 (02-03) ZX-9R ZR1000 A1-3 (03-06) Z1000
		Triumph	Daytona 675cc (08-) Street Triple (08-)
		Honda	VF750 C (92-) Magna/RS
		Triumph	Tiger 800 (11)
92RH2015	130	Honda	CBR1000 XX (97-02) CBR1100 (99)
		Kawasaki	ZX1400 A, B (06-11) ZZ-R1400, ZX1400 C (08-) 1400 GTR
92RH2015	132	TM	530 (05-)
		Yamaha	FZ1 (03-) FZS1000 Fazer (00-) RX1 1000 (04-05) YZF-R1 (98-03)
		Honda	VF800 F1 Interceptor (02-) VFR800 (13- )
		Kawasaki	ZX1200 A1, 2 (00-01), B1-4 (02-06) ZX-12R
		Kawasaki	ER650 A, B (06-) ER-6F - N EX650 AB (06-) ER-6f KLE650 A/B VERSYS ZX900 B1-4 (94-97) ZX-9R
92RH2015	134	Triumph	Bonneville - Speedmaster - Thruxton 865cc (09-) America 865cc (07-) Scrambler 865cc (09-) Speed Triple - Sprint - Tiger 1050cc (08-)
		Yamaha	VMax 1200 (08-)
		Kawasaki	JT1200 B1, 2 (03-04), D1 (05-06) Jet Sky STX-12F
		Kawasaki	JT1500 A1, 2 (04-05) Jet Sky STX-15F
92RH2015	140	Yamaha	FJR1300 (01-)
		Honda	CBR1000 XX (03) VTX1300
92RH2015	142	Kawasaki	ZR400 G1-9 (96-06) Zephyr
		Triumph	Thunderbird 1600 cc (All)
92RH2015	146	Honda	CB1100 F (14-) CB1300 DC (97-02) CB1300 (14-) CBR1000 (03-)
		Honda	GL1800 (01-)
		Voxan	All
		Honda	X4 1300 (97-)
92RH2015	170	Triumph	Rocket III 2300cc (07-)
92RH2015	174	Kawasaki	KL650 A9-19 (95-05), C1-10 (95-04), D1 (99) KLR600 KL650 C (95-) KLR650 KL650 D1-6 (96-97-99-01) KLX650 R
			ACG / Alternatore

## 92RH2020

92RH2020	124	Honda	CBR1000 RR (08-)
92RH2020	152	Honda	VTR1000 F(97-)

# 96RH2015



96RH2015	108	Honda	CRF450 R (08-)	P/N 1440 1-MEN-A330-M1
96RH2015	120	Honda	NSF250 R (12-)	

# 98XRH2010

98XRH2010	52	Kawasaki	JT1500 A (06-)	Jet Sky STX-15F	ACG / Alternatore
			JT1500 B (07-)	Jet Sky Ultra 250 X	ACG / Alternatore
			JT1500 C (07-)	Jet Sky Ultra LX	ACG / Alternatore
98XRH2010	114	Yamaha	YZ250 F (14)		
98XRH2010	116	Kawasaki	ZX600 K1, 2 (03-04), M1 (04), N1 (05)	ZX-6RR	
			ZX600 (07-13)	ZX-6R	
			ZX636 B1, 2 (03-04), C1 (05), D(06-)	ZX-6R	
98XRH2010	118	Gas Gas	250cc (All)		
		Yamaha	WR450 F (04-)		
			YZ400 F (03-)		
			YZ450 F (04-08)		
98XRH2010	120	Yamaha	FZ6R (09-)		
			Grizzly 450 (08-)		
			XJ6 Diversion (09-)		
98XRH2010	122	Kawasaki	KX450 (08-)	KX450 F	
		Yamaha	YZ450 F (09-)		
98XRH2010	124	Aprilia	RSV4R 1000 (-9/2010)		
		Kawasaki	KX450 (06-08)	KX450 F	
		Yamaha	FZ8R (10-)		
98XRH2010	126	Kawasaki	KSF450	KSF450 R	
		Yamaha	XT660R (03-)		
			YFM700 FWAD Grizzly (07-)		
98XRH2010	128	Yamaha	MT-09 (2014)		
98XRH2010	132	Yamaha	V Star1300		
98XRH2010	136	Kawasaki	JT1500 A (06-)	Jet Sky STX-15F	
			JT1500 C (07-)	Jet Sky Ultra LX	
98XRH2010	140	Yamaha	Nytro		

# 98XRH2015

98XRH2015	70	Kawasaki	VN2000 A1, 2 (04-06)	E F (06)	VN2000/Classic (LT)
98XRH2015	80	KTM	SX-F 450 (08>09), SX-F 505 (08>09), SX-F 505 (08>09), XC-F 450 (08>09), XC-F 505 (08>09), SMR 450 (08>09)		
98XRH2015	108	BMW	S1000 RR (All)		
98XRH2015	112	KTM	SX-F 350 (09>), EXC-F 350 (11-)		
98XRH2015	118	Yamaha	Phazer (06-)		
			YZF-R6 (06-08)		
98XRH2015	124	Aprilia	RSV4R 1000 (9/2010-), RSV4 1000 Factory, Tuono 1000 (10-)		
98XRH2015	124	Kawasaki	ZX1000 (04-)	ZX-10R	
98XRH2015	126	BMW	K1200 R, K1300 R, K1200 LT, K1300 GT, K1300 S (06-)		
98XRH2015	126	Kawasaki	ZX1000 (11-)	ZX-10R	
98XRH2015	130	Yamaha	RX1, RX Warrior 1000 (05-)		
98XRH2015	132	Kawasaki	ZX1400 E/F(12-)	ZX14 R, ZZR1400	
98XRH2015	134	BMW	K1600 GT, K1600 GTL (11-)		
98XRH2015	138	Kawasaki	JT1500 B (07-)	Jet Sky Ultra 250 X	
98XRH2015	146	BMW	F800 R, F800 GS, F800 S, F800 ST (All)		
98XRH2015	150	Yamaha	TDM 1200 (10-)	P/N 94591-61150	

# 98XRH2020

98XRH2020	122	Yamaha	YZF-R1 (04-06)		
98XRH2020	124	Yamaha	YZF-R1 (07-08)		
98XRH2020	126	Yamaha	YZF-R1 (09-)		
98XRH2020	138	Kawasaki	JT1500 B (11-)	Jet Ssky Ultra 300X	
98XRH2020	144	Buell	1125CR - R (All)		